

**DOOR COUNTY, THE BEST PLACE TO
FIND A UNIQUE GIFT IN THE
MIDWEST!**

- Midwest Living Magazine

Escape the cookie cutter mall experience of franchise shops. Door County is home to an extraordinarily diverse retail community. Antiques, art, home décor, apparel, lighthouse treasures and gifts galore grace the communities of the Peninsula. It is nirvana for any shopaholic.

While you're finding the perfect gifts and souvenirs don't miss the many specialty food shops and farm stands. It's always a good idea to bring home a taste of the Door County Peninsula.

Baileys Barn Antique & Gifts

**10079 Hwy 57 - Baileys Harbor
(920) 854-2412**

Hours: May-October

Information: Located 2 miles south of Sister Bay, just north of County Q and Hwy 57. The 135 year old barn has 5,000 square feet filled with antiques, home accessories, artwork, candles and gifts.

Bungalow by the Bay

**4199 Main St. - Fish Creek
(920) 868-9800**

Hours: Daily Mid May-Mid October 10am-9pm

Information: Fresh, unique and different at very affordable prices. Offering the latest in home furnishing and accessories with first rate customer service. Free delivery and shipping anywhere in the country.



Chelsea Antiques & Blue Willow Shops

**10002 Hwy 57 - Sister Bay
(920) 854-4828**

Hours: Mid May-October 10am-5pm Daily

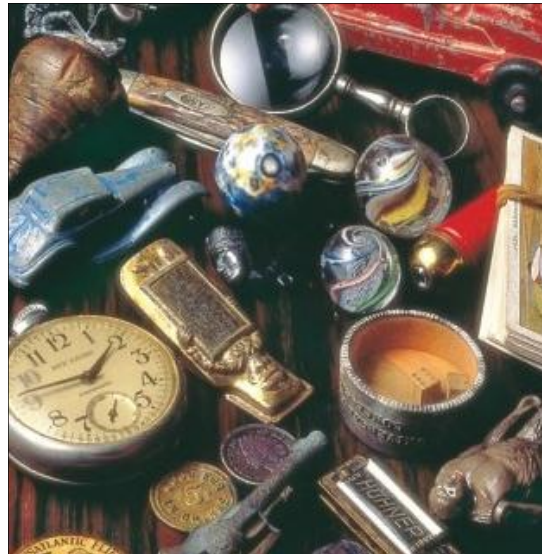
Information: Located in the beautiful Door County countryside, the shops are a celebration of the American home. Delight your senses and enhance all aspects of your lives from our gardens and interiors to our foods and spirits. Twice voted best antique shop in Wisconsin by readers of Wisconsin Trails Magazine.

City Farmer

**10432 Hwy 42 - Ephraim
(920) 854-7501**

Hours: May-October 9am-6pm daily

Information: Features a distinctive collection of American and English country furniture and home accents, reproductions of antique furniture, porch and garden accessories, lamps, wall art, pottery, clocks, books, rugs, ceramics, and silk flowers. Browse quality home furnishings and sophisticated accessories in a restored historic red dairy barn.



Koepsel's Farm Market

**9669 Hwy 57 - Baileys Harbor
(920) 854-2433**

Hours: Daily 8am May 1 -October 31

Information: Oldest farm market in Door County with a large selection of unique antiques! Located on the quiet side between Baileys Harbor and Sister Bay, a "must stop" for all visitors.



Linden Gallery

**12001 Mink River Rd - Ellison Bay
(920) 854-2487**

Hours: May-October 10am-5pm daily

Information: Brian and Jeanee Linden opened Linden Gallery in 1996 in a former church. They spend 6 months in Asia collecting furniture, antiques, original art and vintage textiles. The gallery has over 6,000 square feet and an extensive rock garden. In 2008 the Lindens renovated old country home in China to promote cultural exchange and awareness between the U.S. and China.

Newport House Gallery

**12044 Hwy 42 at Lakeview Rd - Ellison Bay
(920) 854-2621**

Hours: Mon-Sat 10am-5pm (Closed Tue) Sunday 11-4pm

Information: Antiques, fine art, fine craft. Collectors of antiques seeking the unique and unusual will find this Door County destination offers an excellent selection of 18th and 19th century antiques and accessories. The gallery also offers carefully-chosen antiques and contemporary folk art.

Peninsula Antique Center
 7150 Hwy 42 - Egg Harbor
 (920) 868-3360

Hours: May 1st-Oct 31st, 10-5pm Daily

Information: Multi dealer mall with various antiques, collectibles, clocks, folk art, glassware, china, etc. Presented in a well-lighted building, air conditioned for your comfort.

Peninsula Bookman

4083 Main St. Barringer Shops - Fish Creek
 (920) 868-1467

Hours: May-Oct 10am-5pm daily

Information: Collection of new and out-of-print Door County books and over 14,000 new, used and rare books! Inventory includes fiction, mystery and suspense novels, plus a broad selection of history, militia, Americana, Native American, nature, adventure and art. Specializing in titles of local and regional focus and out-of-print titles in many categories.



Stevenson Antiques, LLC
 11996 Hwy. 42 - Ellison Bay
 (920) 740-1888

Hours: May-October 10am-5pm Closed Tuesdays

Information: Customer and dealer friendly, single owner antique shop specializing in the unique and unusual. Always a diverse assortment of pottery, stoneware, banks, toys, glassware, folk art, advertising, books, furniture, primitives, holiday items, country store, lighting, doorstops, paintings, just to mention a few. Been in business for about 30 years, both as collectors and show dealers and are members of the Wisconsin Antique Dealers Assn.



Door County Antiques Map



ANTIQUES GUIDE

OF DOOR COUNTY



a quick
 reference
 guide
 compliments
 of the
 Door
 County
 Visitor
 Bureau

Compliments of the



©800-52-RELAX (73529)