

Water to Wine...

A cultural, historical
and maritime tour of
Door County, WI.



This unique partnership of local attractions offers the tour operator a comprehensive view of the best that Door County has to offer. Guests will experience the culinary diversity and maritime history that are hallmarks of life on the Door Peninsula.

Learn the maritime history...

of Door Peninsula via a docent led tour of the Door County Maritime Museum. And climb aboard the floating museum attraction, the tug John Purves



Visit a lighthouse...

and let your guests enjoy scenic views while gaining greater historical perspective at the Eagle Bluff Lighthouse Museum.



Get out on the water...

aboard the Harbor Lady and enjoy the best waterfront views in Door Co. The enclosed cabin is climate controlled for comfort whatever the weather. Full bar and meal services are available for lunch or dinner cruises.



Go behind-the-scenes...

at Door County's only coffee roaster and drink in rich aromas while perking up for a fun filled day in Door County.



Tour the county's only combined winery & distillery...

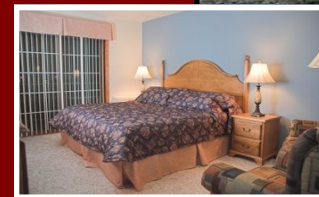
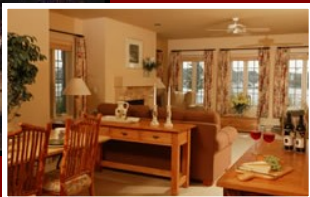
and enjoy hand-tossed pizza and grilled Panini in our newly remodeled restaurant...

Bistro 42



Stay the night...

in downtown Sturgeon Bay with convenient access to shopping, and local businesses. Enjoy well appointed rooms and Porter assisted check-in & check-out.



Stone Harbor Resort & Conference Center

Bridgeport Waterfront Resort

SAMPLE ITINERARY

Day 1 12:00 pm



12:30pm - 2:30 pm



3:00 pm – 5:00 pm



5:30 pm - 6:45 pm



7:00pm - 9:00 pm



Day 2 7:00 am - 8:30 am



9:00 am - 10:30 am



11:30 pm - 12:30 pm



11:30 pm - 2:00 pm



Door County Visitors Bureau Meet & Greet

At the first stop in Door county a member of the Visitors Bureau will welcome your guests, introduce them to local attractions and provide an overview of your itinerary and answer questions.

Door Peninsula Winery Tour and Lunch

Have a delicious lunch in Bistro 42, a full service, contemporary Italian-American restaurant serving hand tossed pizza and grilled Panini sandwiches. Then your group will be given an exclusive behind-the-scenes tour of the winery and the new Door County Distillery, followed by an informative wine tasting. Then shop for wines, spirits and locally produced gourmet products in our retail shop.

Door County Maritime Museum Tour

Shipbuilding heritage, lighthouse lore, magnificent models and artifacts are all part of this docent-led tour which also features the historic tug *John Purves*.

Hotel Check-in

Downtown Sturgeon Bay has two waterfront lodging options with a variety of amenities and services available, including porter assisted check-in

Dinner Cruise aboard the Harbor Lady

Enjoy an all-you-can-eat dinner buffet with fantastic views of Green Bay. The Harbor Lady has enclosed salons with heat and air-conditioning, making it an ideal venue for spring, summer or fall. The large windows and open viewing decks allow your guests to enjoy Door County's waterfront.

Hotel Breakfast/Check Out /Departure

Enjoy flexible porter assisted checkout services with each of our downtown lodging partners.

Breakfast and Tour of Door County Coffee & Tea company

Perk-up with a cup of fresh coffee and a hearty breakfast then treat your guests to a behind-the-scenes tour of the only coffee roasting facility in Door Co. Rich aromas and fresh baked goods provide the perfect energy boost to start a fun and active day.

Tour of Eagle Bluff Lighthouse

Knowledgeable docents share the personal stories of the keepers who manned the light from 1868 – 1926. Furnished with some of the keepers' original furnishings, as well as authentic period antiques, the Eagle Bluff Lighthouse Museum is a glimpse into the maritime history of Door Co.

Fish Creek luncheon and shopping

Enjoy a delicious buffet at Cooper's Corner in Fish Creek and then sample gourmet olive oils, vinegars and homemade fudge next door at the Barrel Room. Take a stroll through historic Fish Creek and visit the many shops and retail stores all within walking distance.

Door County Visitors Bureau*
 Door County Coffee & Tea Co.
 Eagle Bluff Lighthouse Museum
 Door County Maritime Museum*
 Harbor Lady Cruises*
 Stone Harbor Resort
 Bridgeport Resort

Michelle Rassmusson
 Sally Stenzel
 Patricia Podgers
 Jon Gast
 David Graves
 Nancy Bertz
 David A Holtz

BOOKING INFORMATION

(920)-243-1127 or email michelle@doorcounty.com
 (920)-743-8808 or email sal@doorcountycoffee.com
 (920)-421-3636 or email podge47@dcwis.com
 (920)-743-9483 or email jgast@dcomm.org
 (920)-882-7900 or email David@harborlady.com
 (920) 746-0700, ext 286 or email nbertz@stoneharbor-resort.com
 1-800-671-9190 or email www.bridgeportresort.net

Door Peninsula Winery* - Door County Distillery - Bistro 42 - Coopers' Corner - The Barrel Room

Ted O'Neill (920)-559-9188 or email ted@dcwine.com

*Member



Circle Wisconsin